

HOFFER

Perfecting Measurement™



Ультразвуковые расходомеры серии Transi-Flo II

Технические характеристики

По вопросам продаж и поддержки обращайтесь:

Архангельск +7 (8182) 45-71-35	Калининград +7 (4012) 72-21-36	Новороссийск +7 (8617) 30-82-64	Сочи +7 (862) 279-22-65
Астана +7 (7172) 69-68-15	Калуга +7 (4842) 33-35-03	Новосибирск +7 (383) 235-95-48	Ставрополь +7 (8652) 57-76-63
Астрахань +7 (8512) 99-46-80	Кемерово +7 (3842) 21-56-70	Омск +7 (381) 299-16-70	Сургут +7 (3462) 77-96-35
Барнаул +7 (3852) 37-96-76	Киров +7 (8332) 20-58-70	Орел +7 (4862) 22-23-86	Сызрань +7 (8464) 33-50-64
Белгород +7 (4722) 20-58-80	Краснодар +7 (861) 238-86-59	Оренбург +7 (3532) 48-64-35	Сыктывкар +7 (8212) 28-83-02
Брянск +7 (4832) 32-17-25	Красноярск +7 (391) 989-82-67	Пенза +7 (8412) 23-52-98	Тверь +7 (4822) 39-50-56
Владивосток +7 (4232) 49-26-85	Курск +7 (4712) 23-80-45	Первоуральск +7 (3439) 26-01-18	Томск +7 (3822) 48-95-05
Владимир +7 (4922) 49-51-33	Липецк +7 (4742) 20-01-75	Пермь +7 (342) 233-81-65	Тула +7 (4872) 44-05-30
Волгоград +7 (8442) 45-94-42	Магнитогорск +7 (3519) 51-02-81	Ростов-на-Дону +7 (863) 309-14-65	Тюмень +7 (3452) 56-94-75
Воронеж +7 (4732) 12-26-70	Москва +7 (499) 404-24-72	Рязань +7 (4912) 77-61-95	Ульяновск +7 (8422) 42-51-95
Екатеринбург +7 (343) 302-14-75	Мурманск +7 (8152) 65-52-70	Самара +7 (846) 219-28-25	Уфа +7 (347) 258-82-65
Иваново +7 (4932) 70-02-95	Наб.Челны +7 (8552) 91-01-32	Санкт-Петербург +7 (812) 660-57-09	Хабаровск +7 (421) 292-95-69
Ижевск +7 (3412) 20-90-75	Ниж.Новгород +7 (831) 200-34-65	Саранск +7 (8342) 22-95-16	Чебоксары +7 (8352) 28-50-89
Иркутск +7 (3952) 56-24-09	Нижневартонск +7 (3466) 48-22-23	Саратов +7 (845) 239-86-35	Челябинск +7 (351) 277-89-65
Йошкар-Ола +7 (8362) 38-66-61	Нижнекамск +7 (8555) 24-47-85	Смоленск +7 (4812) 51-55-32	Череповец +7 (8202) 49-07-18
Казань +7 (843) 207-19-05			Ярославль +7 (4852) 67-02-35

сайт: \ cZyf.pro-solution.ru | эл. почта: \ fz@pro-solution.ru
телефон: 8 800 511 88 70

ULTRASONIC FLOWMETERS BY
HOFFER
Perfecting Measurement™

TRANSI-FLO II
ULTRASONIC BATTERY POWERED
GENERAL INDUSTRIAL METERS



The Hoffer Ultrasonic battery powered flow meters of the **Transi-Flo II Series** are intended for measurement and storage of instantaneous flow rate and total volume passing through the meter. Typical applications include cold or hot water in accordance to OIML R49-1 and other similar liquids in water and heat supply systems and in a wide range of industrial applications. Optionally, the meters can be provided with pressure gauges to monitor the fluid pressure in the piping. The **Transi-Flo II** meters are noted for high measurement accuracy and long-term stability over a wide range of measured values. No external power is needed; the meters include no moving parts and compared to

conventional flow meters, their pressure drops are significantly lower. The associated electronic unit provides for processing of the sensor signal and display of the instantaneous flow rate, total flow and fluid pressure, as well as for archiving of the measured data in specified time intervals in the internal meter data logging unit. The archived data can be retrieved either via an optical interface or RS 232 communication line for further processing by, for example, a notebook computer. On-line processing of the measured values is also possible using the pulse or current (4 to 20 mA) outputs.

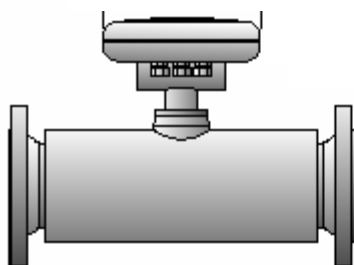
TRANSI-FLO II FLOWMETER SPECIFICATIONS

Line Sizes:	1-1/4" to 12"
Maximum Permitted Pressure	ANSI 150# & 300# Class
Temperature Class	Meter Mounted 32.18°F to 194°F (0.1 to 90°C) Remote 32.18°F to 266°F (0.1 to 130° C)
Measurement Accuracy	According to EN 14154
Pressure Loss Class	Less than 1.5 PSI @ Max. continuous rating
Measurement Range:	(200:1 Turndown) See Chart.
Ambient Temperature	32 to 131°F (0 to 55°C)
Protection Class	IP 67 (NEMA 4X)
Flange Connections	ANSI, JIS, DIN and AS
Flow Sensor Construction Material	Carbon or Stainless Steels
Power Supply	Li Battery 3.6V/16Ah-guaranteed battery lifetime 6 years
Measurement Frequency	1Hz
Display Unit	Single-line 8-Character LCD
Outputs	Passive pulse U = 5 to 25V, I max=10mA, Pulse length 2 ms
Optional meter version and functions	<ul style="list-style-type: none"> • Passive current output 4 to 20mA, U_{max}=24V • Data communication via optical interface • RS 232 communication interface • Data archiving facility • Remote meter version with sensor protection class IP 68, max. fluid temp. 302°F (150°C) • Fluid pressure measurement within the range of 0-217 PSIG (0-16 Bar) • Drinking-water version (with all-stainless-steel sensor)

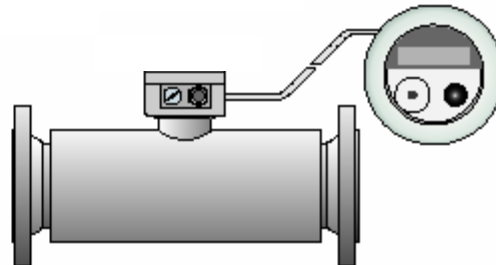
Meter Sizes and Flow Rates

Line Size:	1¼"	1½"	2"	2½"	3"	4"	5"	6"	8"	10"	12"
Minimum Flow Rate GPM:	0.55	0.9	1.4	2.2	3.5	5.5	8.8	14	22	35	55
Transient Flow Rate GPM:	0.9	1.4	2.2	3.5	5.6	8.8	14	22	35	56	88
Steady-State Flow Rate GPM:	110	176	277	440	704	1100	1760	2775	4400	7045	11007
Flow-Rate Overloading GPM:	138	220	347	550	880	1375	2200	3467	5505	8805	13758
K-Factor Pulses/Gallon:	2	5	5	10	15	15	50	50	100	100	200

METER MOUNT



REMOTE MOUNT



The quality system covering the design, manufacture and testing of our products is certified to International Standard ISO 9001.



EPF-BATT-809A

По вопросам продаж и поддержки обращайтесь:

Архангельск +7 (8182) 45-71-35	Калининград +7 (4012) 72-21-36	Новороссийск +7 (8617) 30-82-64	Сочи +7 (862) 279-22-65
Астана +7 (7172) 69-68-15	Калуга +7 (4842) 33-35-03	Новосибирск +7 (383) 235-95-48	Ставрополь +7 (8652) 57-76-63
Астрахань +7 (8512) 99-46-80	Кемерово +7 (3842) 21-56-70	Омск +7 (381) 299-16-70	Сургут +7 (3462) 77-96-35
Барнаул +7 (3852) 37-96-76	Киров +7 (8332) 20-58-70	Орел +7 (4862) 22-23-86	Сызрань +7 (8464) 33-50-64
Белгород +7 (4722) 20-58-80	Краснодар +7 (861) 238-86-59	Оренбург +7 (3532) 48-64-35	Сыктывкар +7 (8212) 28-83-02
Брянск +7 (4832) 32-17-25	Красноярск +7 (391) 989-82-67	Пенза +7 (8412) 23-52-98	Тверь +7 (4822) 39-50-56
Владивосток +7 (4232) 49-26-85	Курск +7 (4712) 23-80-45	Первоуральск +7 (3439) 26-01-18	Томск +7 (3822) 48-95-05
Владимир +7 (4922) 49-51-33	Липецк +7 (4742) 20-01-75	Пермь +7 (342) 233-81-65	Тула +7 (4872) 44-05-30
Волгоград +7 (8442) 45-94-42	Магнитогорск +7 (3519) 51-02-81	Ростов-на-Дону +7 (863) 309-14-65	Тюмень +7 (3452) 56-94-75
Воронеж +7 (4732) 12-26-70	Москва +7 (499) 404-24-72	Рязань +7 (4912) 77-61-95	Ульяновск +7 (8422) 42-51-95
Екатеринбург +7 (343) 302-14-75	Мурманск +7 (8152) 65-52-70	Самара +7 (846) 219-28-25	Уфа +7 (347) 258-82-65
Иваново +7 (4932) 70-02-95	Наб.Челны +7 (8552) 91-01-32	Санкт-Петербург +7 (812) 660-57-09	Хабаровск +7 (421) 292-95-69
Ижевск +7 (3412) 20-90-75	Ниж.Новгород +7 (831) 200-34-65	Саранск +7 (8342) 22-95-16	Чебоксары +7 (8352) 28-50-89
Иркутск +7 (3952) 56-24-09	Нижневартовск +7 (3466) 48-22-23	Саратов +7 (845) 239-86-35	Челябинск +7 (351) 277-89-65
Йошкар-Ола +7 (8362) 38-66-61	Нижнекамск +7 (8555) 24-47-85	Смоленск +7 (4812) 51-55-32	Череповец +7 (8202) 49-07-18
Казань +7 (843) 207-19-05			Ярославль +7 (4852) 67-02-35

сайт: \ cZyf.pro-solution.ru | эл. почта: \ fz@pro-solution.ru
телефон: 8 800 511 88 70



The specifications contained herein are subject to change without notice and any user of said specifications should verify from the manufacturer that the specifications are currently in effect. Otherwise, the manufacturer assumes no responsibility for the use of specifications which may have been changed and are no longer in effect.

The quality system covering the design, manufacture and testing of our products is certified to International Standard ISO 9001.

